

# The Rapid Response from the College of Psychology at University of Sevilla to the Refugee Humanitarian Crisis

---

---

Marta Escobar Ballesta & Manuel García-Ramírez

*CESPYD – University of Sevilla*

SH-CAPAC Reggio Emilia workshop JUNE 16-17 2016

“Improving access to health care and capacity building in Member States under particular migratory pressure”



# The Refugee Humanitarian Crisis

- At the end of 2014, 38 million people were forced to leave their homes.
- More than 12 million need humanitarian aid in Syria.
- Nearly 8 million are internally displaced and 4 million are seeking asylum.
- In October 2015, more than half a million crossed the Mediterranean.
- In the first half of 2015, more than 3,000 corpses were recovered —four times more than 2014.
- A large percentage of the refugees are unaccompanied minors.



Missing Migrant Project. Available from: <http://missingmigrants.iom.int/>

Norwegian Refugee Council. Global Overview 2015. People internally displaced by conflict and violence. Available from: <http://www.internal-displacement.org/assets/library/Media/201505---Global---Overview---2015/20150506---global---overview---2015---en.pdf>

Save the Children. Available from: <http://www.savethechildren.org/site/apps/nlnet/content2.aspx?c=8rKLIXMGIpI4E&b=9241341&ct=14762743>

# CESPYD: Center of Community Research and Action at University of Sevilla



**The International HPH Network**  
The International HPH Secretariat WHO CC For Evidence-Based Health Promotion in Hospital & Health Services



Fostering health provision for migrants, the Roma, and other vulnerable groups



Mobilization of scholars, faculty, professionals, students



# Content

- Mobilizing the University Community
- Working Group to Respond to the Humanitarian Crisis
  - Statement of College of Psychology at University of Sevilla as a Safe Haven
  - International Call for Research and Advocacy Responses to the Global Refugee Crisis
  - Urgent Guide for Psychosocial Intervention with Migrants and Refugees
  - Workshops to raise awareness within the University Community
- Lessons learned

# Mobilizing the University Community

## Meeting with the Dean's Office of the College of Psychology

- Support refugee students and researchers
- Treatment of psychopathological problems
- Training future psychologists and health professionals
- Training volunteers
- Training trainers and faculty
- Improve the arrival of newcomers
- Channel citizens' outrage

# Working Group to Respond to the Humanitarian Crisis: Taking Stock of Assets and Resources

- September 17th, 2015
- Support platform for associations.
- *Participants:* Dean's office, research groups (CESPYD), Faculty of Psychology and others, Coordinators of Master Programs, professional organizations, NGOs, health services representatives, student representatives...
- To capitalize on resources and to undertake multilevel actions:



# 1. Statement of College of Psychology at University of Sevilla as a Safe Haven

Approved by the Faculty Board in  
October 9th, 2015

**1. Train professionals to meet the needs of displaced populations, ensuring sensitive care services**

**2. Lead research and educational programs that combat inequities, empower communities and provide care for victims**

**3. Advocate the support platform for associations**



## 2. International Call for Research and Advocacy Response to the Global Refugee Crisis



<http://www.scra27.org/what-we-do/policy/rapid-response-actions/global-refugee-crisis/#JSqz1XYp4z4yBAyQ.99>

1. Request Mayors to welcome refugees and denounce saboteurs.
2. Write to denounce anti-immigrant rhetoric and voice support for refugees.
3. Denounce hate speech.
4. Contact state and local representatives to express concerns about this.
5. Encourage community leaders and service providers to meet refugees' needs.
6. Raise awareness within the University community.
7. Support populations to take advantage of their strengths.
8. Promotion of multiple stakeholder coalitions for a Global Approach on Migration and Mobility.





# 3. Guide for Psychosocial Intervention with Migrants and Refugees



- Psychology Association in Madrid (COP), University Psychology Clinic at UCM (Universidad Complutense de Madrid), and College of Psychology at US (Universidad de Sevilla).
- Urgent and shared attempt to systematize good practices applicable to this challenge.

# 3. Guide for Psychosocial Intervention with Migrants and Refugees

## PSYCHOLOGICAL ASSISTANCE

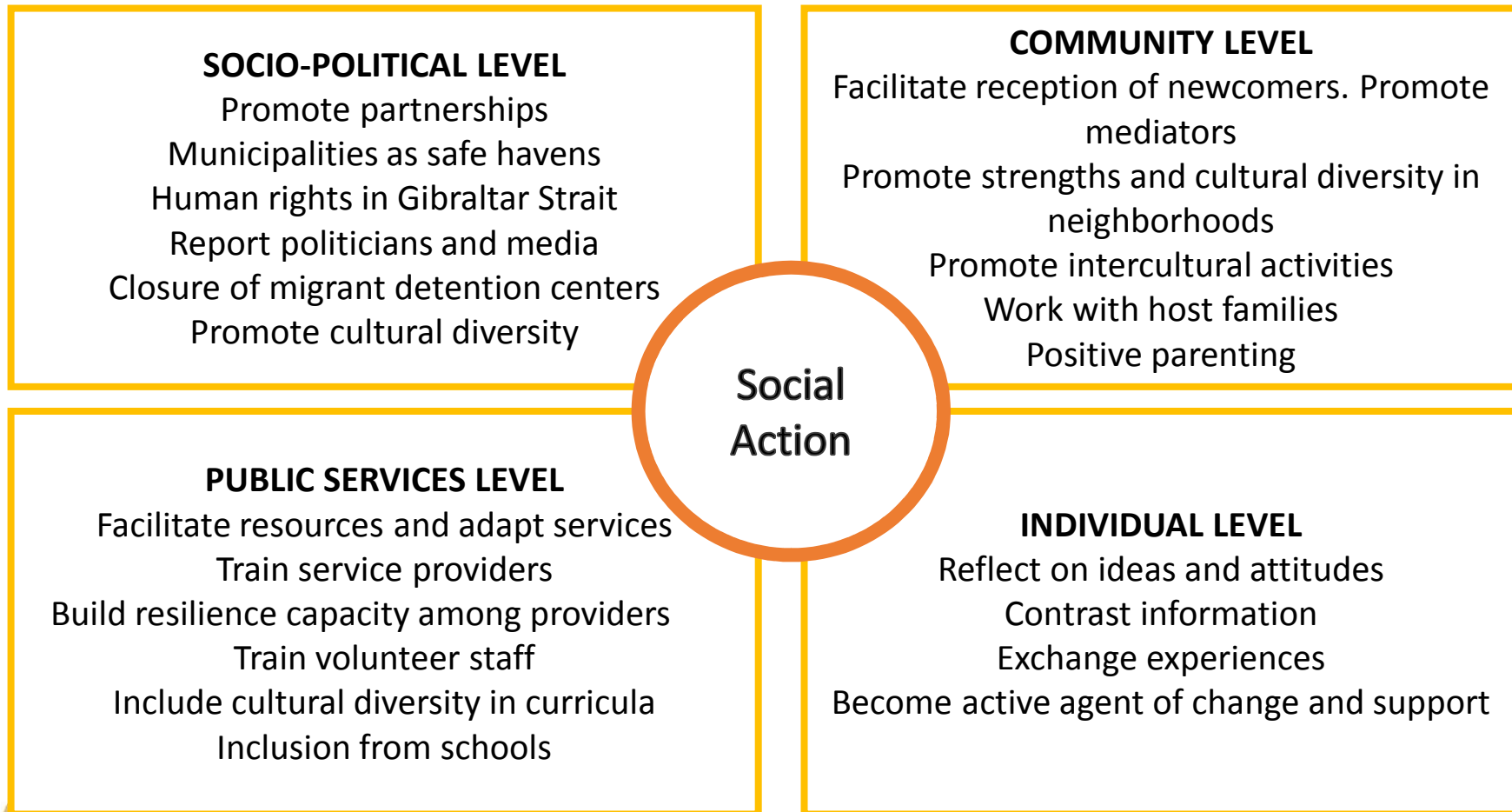
Problems related to: adjustment, grief, traumatic events, lack of understanding (children)

<i>Adults</i>
<ul style="list-style-type: none"><li>- PTSD</li><li>- Depression</li><li>- Complicated grief disorder</li><li>- Adjustment disorder</li></ul>

<i>Children</i>
<ul style="list-style-type: none"><li>- Separation anxiety disorders</li><li>- Depressive symptoms</li><li>- PTSD</li></ul>
*Intervention with parents and children

# 3. Guide for Psychosocial Intervention with Migrants and Refugees

## SOCIAL AND COMMUNITY INTERVENTION



# 4. Workshops to Raise Awareness within the University Community



# Lessons learned

- Response based on denouncing the violation of HHRR.
- Health crisis caused by wars and by the abandonment of institutions.
- Do not content for having good practices and projects waiting for refugees.
- Proactivity. Mobilization processes:
  - Advocacy in European lobbies.
  - Raising awareness and sensitivity in Universities.
  - Building partnerships for coordinated responses
- Adapt to situations that require immediate response with the available resources.
- Reinforcement of resources investment for University, research, training and welcoming refugee scholars and students.

# The Rapid Response from the College of Psychology at University of Sevilla to the Refugee Humanitarian Crisis

---

---

Marta Escobar Ballesta & Manuel García-Ramírez

*CESPYD – University of Sevilla*

SH-CAPAC Reggio Emilia workshop JUNE 16-17 2016

**“Improving access to health care and capacity building in Member States under particular migratory pressure”**

